

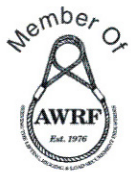
Another

New Product

**McKissick® M-491
Tower/Derrick Blocks**



McKISSICK®
Your Total Block Company.



www.thecrosbygroup.com

**theCrosbygroup,
inc.**

Purpose

To design a block used in tugger hoist and tower applications that provides special features not available with standard snatch blocks.

- ***A larger “sheave diameter” to “wire line diameter” ratio.***
- ***Suitable for use with faster line speeds.***



Designed in cooperation with oilfield and tower contractors, the new design provides the dependability of standard McKissick[®] snatch blocks, along with features that make it perfect for the challenging needs of *tugger hoist* and *tower* applications.



Product Information

- ☑ **Wide range of configurations available.**
 - **Working Load Limits**
 - 4, 8, 12 & 15 Metric Tonnes
 - **Sheave Diameters**
 - 8, 10, 14 & 16 inches
 - 203, 254, 356 & 406mm
 - **Wire Rope Sizes**
 - 3/8" - 1"
 - 10mm – 25mm
 - **Finish**
 - Painted or Galvanized



Product Information

- Lower bolt provides connection when used as foot block.



Product Information

- Opening in side plate provides additional attachment point.



Product Information

RFID EQUIPPED

- Each block comes “factory equipped” with an RFID chip for immediate utilization with various inspection and asset management software.



Product Information

- Manufactured by an API-Q1 Certified Facility**
- Design Factor of 4 to 1**
- Forged steel swivels, tees, yokes and shackles are Quenched & Tempered.**
- Type Approval and certification in accordance with ABS 2006 Steel Vessel Rules 1-1-17.7, and ABS Guide for Certification of Cranes.**



Product Information

- ☑ All blocks 14" and larger are furnished with McKissick[®] Roll-Forged[™] sheaves that have flame hardened grooves.



Product Information

- Opening feature permits insertion of rope while block is suspended.



Product Application

2

Unscrew locking bolts

- Blocks contain exclusive bolt retaining spring to assure no lost bolts.



Product Application

3

Rotate side plate to open position.



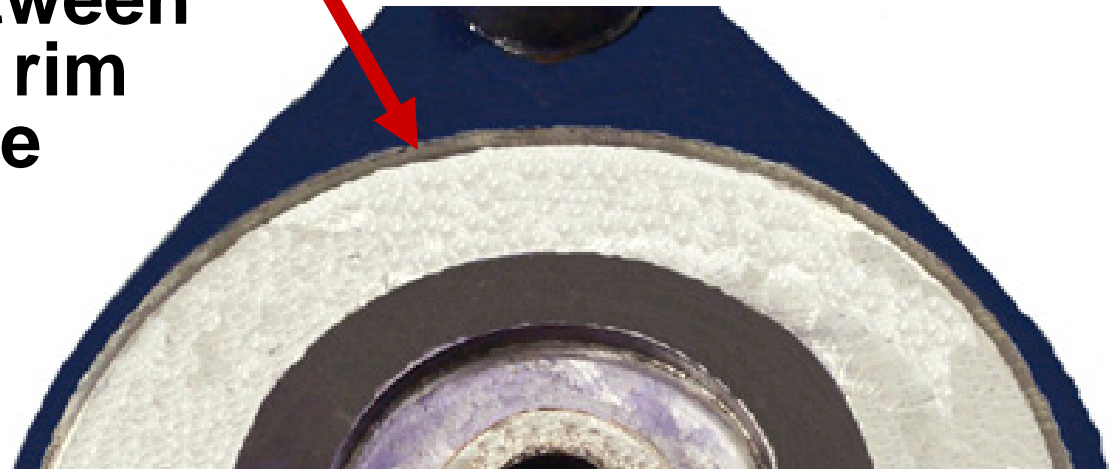
Product Application

- ☑ **Shackle fitting swivels for easy positioning.**
 - Forged steel swivels, tees, yokes and shackles are Quenched & Tempered.



Product Application

- Recessed side plate design reduces the gap between the sheave rim and the side plate.



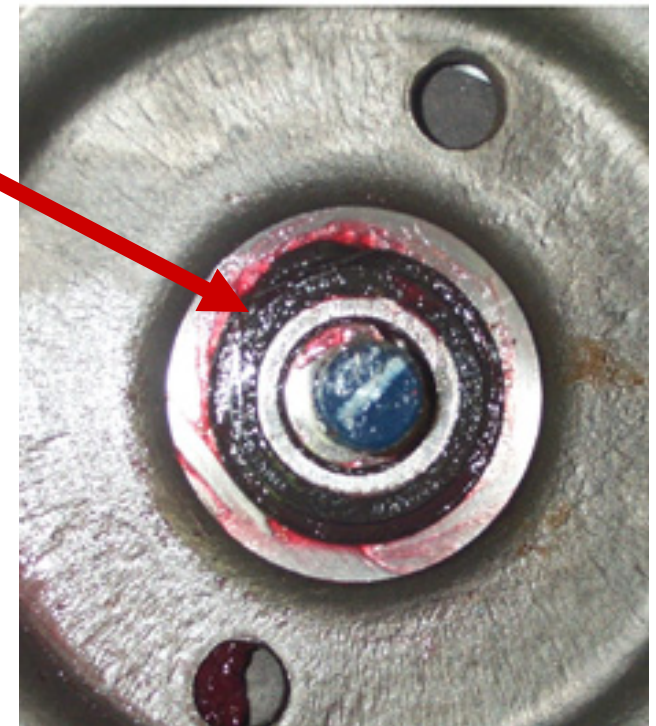
Product Application

- ☑ **Convenient lubrication of bearing through center pin for easy maintenance.**
 - **Proper inspection and maintenance procedures are recommended in order to maximize life of bearing and block, as well as to ensure proper performance.**



Product Application

- Contains sealed tapered roller bearings that:**
 - **Extends bearing life**
 - **Makes it suitable for use with faster line speeds than recommended with standard snatch blocks.**



Product Application

- Suitable for hoisting personnel when rating at 10:1 design factor.***
 - **Contingent upon all employees, including the winch operator, being trained to follow any applicable federal, local and industry standards.**

Product Application

Instructions for using the block in personnel lifting applications is affixed to the block.

- **Personnel hoist blocks shall have a minimum design factor of 10 to 1 during personnel lifts.**



Product Offering

Working Load Limit (t)		Sheave Diameter (in.)	Wire Rope Size (in.)	M-491S Stock No. Painted	M-491G Stock No. Galvanized	Weight Each (lbs.)
Load Hoisting 4:1	Personnel Hoisting 10:1					
4	1.6	8	3/8 - 1/2	2020161	2020170	35
8	3.2	10	3/8 - 1/2	2020806	2020815	55
8	3.2	10	1/2 - 9/16	2020824	2020833	55
12	4.8	10	1/2 - 9/16	2021118	2021127	55
12	4.8	14	5/8	2021136	2021145	95
12	4.8	14	3/4	2021154	2021163	95
15	6	16	7/8	2021172	2021181	150
15	6	16	1	2021190	2021199	150